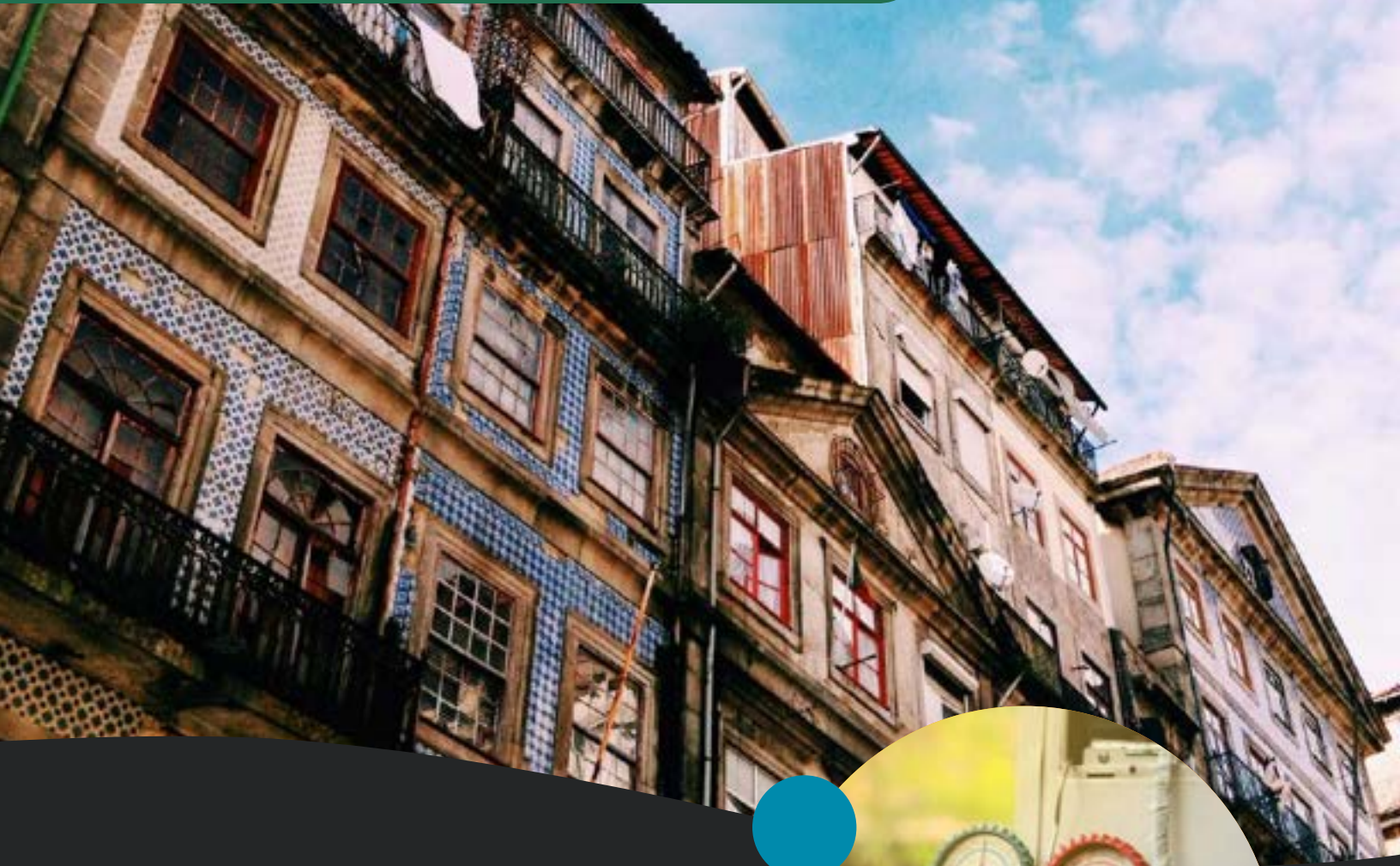


CHAMPION

.5-1.5 HP | RECIPROCATING AIR COMPRESSORS

Climate Control





Meeting your Needs,
Exceeding your
Highest **Expectations**



Distinct **Value** Ultimate Dependability

A Winning Combination

With today's sophisticated climate control systems, a lot can depend on the performance of an air compressor. Champion air compressors are known world wide for trouble-free operation, long life, and built-in efficiencies. You can count on them to keep operating smoothly.

The Solution to your Application

The Champion line of specially designed climate control compressors represents years of intensive industrial research and testing. Champion has designed a line of machines suitable to critical industry demands for value and lasting performance, with features others only wish they could offer.

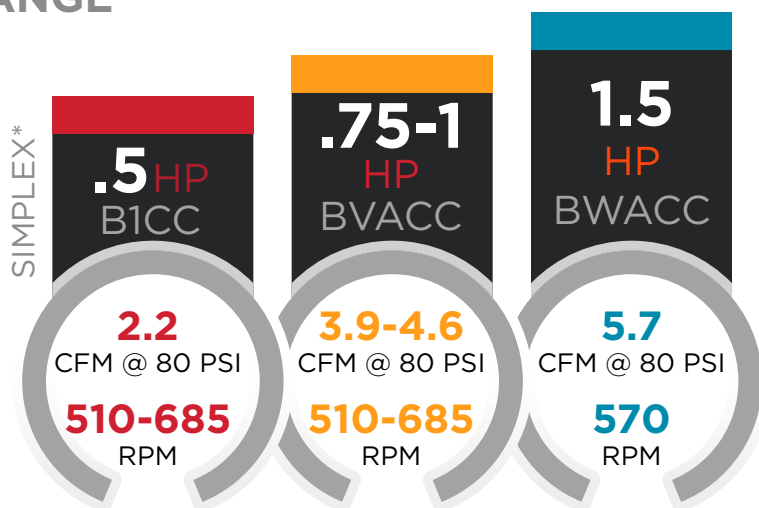




Design Advantage

- 0.5-1.5 horsepower range
- 80 PSI
- Simplex or duplex horizontal tank configurations
- Mounted dryer option
- Single stage pump 0.5-1.5 HP utilizes special B1, BVA and BWA pumps
- Splash lubricated

RANGE



*Double CFM values for Duplex Units

Standard Features

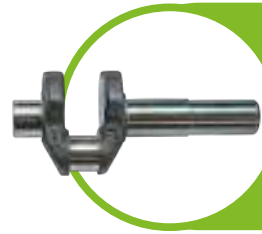
- Certified low oil carry over of 2 PPM
- Low operating RPM
- Lower operating temperatures
- Greater energy efficiency
- Inlet filter silencers
- ASME coded air receiver
- NEMA rated electric motors
- 0-300 PSI air pressure gauge on receiver
- Factory fill with ChampLub reciprocating compressor lubricant
- 1-Year warranty

Available Options

- Magnetic starter
- Automatic receiver drain
- Refrigerated air dryers
- Control panels
- Vibration isolator mounts

It's all in the Details

- Cast iron cylinders for holding rigid tolerances and ensuring high compressor efficiency.
- Lightweight aluminum alloy pistons ensure proper reciprocating balance. Two compression rings and one oil-control ring are used for better oil control, less air blow-by, and higher efficiency.
- High density, high silicon die-cast aluminum alloy connecting rods minimize reciprocating weight and help promoted exceptional compressor life.
- High-quality steel reed-type valves provide long life.
- Tapered roller bearings on two- and three-cylinder models provide premium low friction movement for maximized efficiency.
- Precision balanced flywheel has fan blades for maximum compressor cooling—resulting in cooler compressor operating temperatures.
- Rugged ductile iron crankshaft has large diameter throws for minimum bearing loads and counter weights to minimize vibration.



Automotive style double-throw (balanced and counterweighted) crankshaft provides optimum compressor performance



Tapered roller bearings for long life and trouble-free operation



High-quality steel reed-type valves provide long life

Compressor Pump Features

- Single-stage cast iron compressor pump and crankcase
- Multi-finned cylinders
- Industrial grade intake filter
- Ductile iron crankshaft
- Weights to minimize vibration



Aftermarket Parts & Lubricants

Protect Your Investment in Champion

Only Champion can provide the assurance that your investment will maintain the productivity your business requires. Regular maintenance and service will ensure that you continue to enjoy the productivity and benefits that Champion products provide.

Reliability

Only Champion can provide parts and services designed specifically with your business in mind. All parts and lubricants have been engineered to the highest standards and rigorously tested to meet the most stringent quality measures.

Performance

Champion understands the importance of performance and efficiency to your business. Only Champion can provide factory certified parts that ensure your investment will continue to perform year after year with the same reliability and efficiency as when new.

Ease of Doing Business

Only Champion can provide the peace of mind of turning to one supplier and one source for all aftermarket needs. Champion has the support network in place to handle all of your customer service, service and technical support where and when you need it.

Value

Only Champion can provide high quality aftermarket parts and services for the life of your investment. Proper care of your investment is vital to the equipment's performance and efficiency. Rely on a trusted source—Champion.

For further assistance, contact your local authorized Champion distributor.



Sales & Service **Distributors** Across America

An Extensive Network

Your sales, service and technical support needs will be handled quickly and easily by our extensive network of Champion factory-trained, authorized local distributors. Maintaining and adequately servicing your compressor has never been easier.

Over **1,100** Champion distributors ready to provide solutions to all your compressed air needs

To find a distributor visit:
www.championpneumatic.com



Champion is committed to
delivering **superior products** built with
the **exceptional standards** you expect.

CHAMPION[®]

1301 North Euclid Avenue
Princeton, IL 61356
www.ChampionPneumatic.com



©2022 Gardner Denver, Inc. Printed in U.S.A.
CR-CLIMATE-CTRL 2nd Ed. 9/22